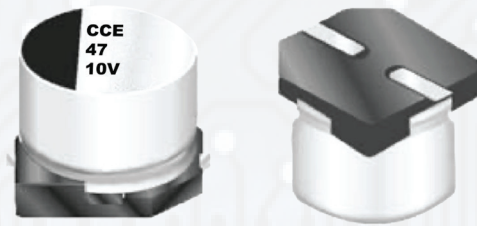


SMD ALUMINUM ELECTROLYTIC CAPACITORS

- CVS SERIES -

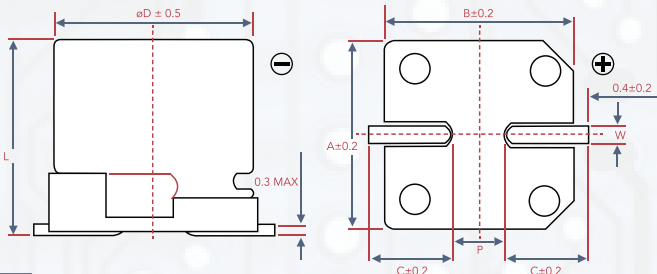
FEATURES

- 4Ø~6.3Ø, 105°C, 1,000 hours assured
- Vertical chip type miniaturized for 5.5mm high capacitor
- Designed for surface mounting on high density PC board
- RoHS Compliance



CONSTRUCTION AND DIMENSIONS

LEAD SPACING AND DIAMETER



øD	L	A	B	C	W	P ± 0.2
4	5.2±0.2	4.3	4.3	2.0	0.5 to 0.8	1.0
5	5.2±0.2	5.3	5.3	2.3	0.5 to 0.8	1.5
6.3	5.2±0.2	6.6	6.6	2.7	0.5 to 0.8	2.0

SPECIFICATIONS

ITEM	SPECIFICATION
Operating Temperature Range	-55°C ~ +105°C
Capacitance Tolerance	±20% (at 120Hz, 20°C)
Leakage Current (at 20°C)	I = 0.01CV or 3 (µA) whichever is greater (after 2 minutes) Where, C= rated capacitance in µF, V= rated DC working voltage in V
Dissipation Factor Tan δ at 120Hz, 20°C	RATED VOLTAGE
	TAN δ (MAX)
Low Temperature Characteristics (at 120Hz)	Impedance ratio shall not exceed the values given in the table below.
	RATED VOLTAGE
	IMPEDANCE RATIO
Load Life Test	TEST TIME
	CAPACITANCE CHANGE
	DISSIPATION FACTOR
	LEAKAGE CURRENT
Shelf Life Test	*The above specifications shall be satisfied when the capacitors are restored to 20°C after the rated voltage applied for 1,000 hrs at 105°C. Test time: 1,000 hrs; other items are the same as those for the load life test
Ripple Current & Frequency Multipliers	V.D.C. (V)
	FREQ. (Hz)
	under 16
	25-35
Other Standards	JIS C 5101-1, -18

DIMENSION & PERMISSIBLE RIPPLE CURRENT

Dimension: øDxL (mm)
Ripple Current: mA/rms at 120 Hz, 105°C

VDC	CONTENTS	6.3V (OJ)		10V (1A)		16V (1A)		25V (1E)		35V (IV)		50V (1H)	
		ØDxL	mA	ØDxL	mA	ØDxL	mA	ØDxL	mA	ØDxL	mA	ØDxL	mA
0.1	0R1											4x5.3	2
0.22	R22											4x5.3	3
0.33	R33											4x5.3	4
0.47	R47											4x5.3	5
1	0.10											4x5.3	7
2.2	2R2											4x5.3	10
3.3	3R3											4x5.3	12
4.7	4R7							4x5.3	12	4x5.3	14	5x5.3	17
10	100			4x5.3	15	4x5.3	16	5x5.3	21	5x5.3	23	6.3x5.3	26
22	220	4x5.3	21	5x5.3	25	5x5.3	28	6.3x5.3	26	6.3x5.3	50	6.3x5.3	61
33	330	5x5.3	30	5x5.3	31	6.3x5.3	40	6.3x5.3	44				
47	470	5x5.3	36	6.3x5.3	43	6.3x5.3	47	6.3x5.3	60				
100	101	6.3x5.3	61	6.3x5.3	65	6.3x5.3	70						